



## COMPATIBILITY TO THE MOST COMMON RESIDENTIAL SERIES PLATES

### CONTENT OF PACKAGING

- 1 Electronic recessed device
  - 1 T1 model sub-frame
  - 2 screws for fastening the sub-frame to the type 503 wall-mounted recess box
  - 1 Front + handle (only for thermostat) with WHITE POLISHED finishing
  - 1 Front + handle (only for thermostat) with ANTHRACITE finishing
  - 1 Front + handle (only for thermostat) with SILVER MATT finishing
  - 1 Set of reduced thickness ledges (only for BTICINO Matix series)
  - 1 Frame (only for Axolute BTICINO series)
- Use and installation instructions  
Compatibility to the most common residential series plates

#### The trademarks:

Chiara is property of ABB SpA  
Ave sistema 44: personal 44, zama 44, vera 44 are property of AVE SpA  
Axolute - Axolute air - Light - Light Tech - Living - LivingLight - LivingLight Air - Matix, are property of BTICINO SpA  
Chorus ONE/LUX/FLAT/GEO, are property of GEWISS SpA  
Arké - Eikon - Eikon Evo - Plana, are property of VIMAR SpA

### DEVICE CAN BE INSTALLED WITH PLATES

**ABB:** CHIARA

**AVE:** with dimensional adaptability kit (can be purchased separately)  
**SISTEMA AVE44:** Personal 44, Zama 44, Vera 44

**BTICINO:** AXOLUTE: white / anthracite / tech - MATIX LIVING - LIGHT - LIGHT TECH  
LIVINGLIGHT: anthracite / white / tech  
with dimensional adaptability kit (can be purchased separately)  
AXOLUTE AIR: anthracite/white/tech  
LIVINGLIGHT AIR: anthracite/white/tech

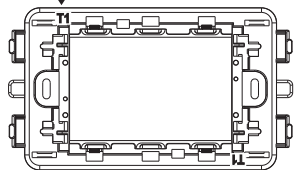
**GEWISS:** CHORUS white/black/titanium: ONE/LUX/FLAT/GEO

**VIMAR:** ARKÉ PLANA  
EIKON: grey/white/next PLANA SILVER

with dimensional adaptability kit (can be purchased separately)  
EIKON EVO: grey/white/next

## SET-UP OF SUB-FRAME (T1) BASED ON THE PLATE USED

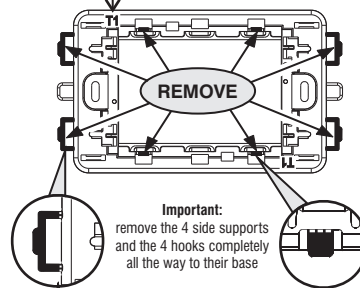
### Sub-frame 1 (T1)



Sub-frame without any change

For plates of the series:  
**VIMAR:**  
ARKÉ  
EIKON  
PLANA  
PLANA SILVER  
**ABB:**  
CHIARA

### Sub-frame 1 (T1)



**Important:**  
remove the 4 side supports  
and the 4 hooks completely  
all the way to their base

Note for the installer: with BTICINO serie Living, Light, Light Tech, Livinglight, Livinglight tech plates, if they are already present on the recess box and respective BTICINO frames, it is possible to insert the electronic device directly in these frames.

For plates of the series:  
**BTICINO:** LIVING LIGHT - LIGHT TECH - LIVINGLIGHT  
MATIX (it also requires insertion of the reduce thickness side ledges)  
AXOLUTE (it also requires insertion of the frame)

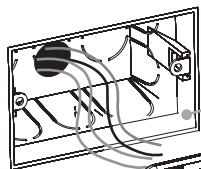
For plates of the series:  
**GEWISS CHORUS:** ONE/LUX/FLAT/GEO

# ASSEMBLY OF THE ELECTRONIC DEVICE BASED ON THE PLATE USED

**Attention:** before installing the electronic device, deactivate the 230V~ mains voltage

**Important:** plate seal on the sub-frame of the electronic device is only guaranteed through a correct installation of the 503 recess box (set flush in the wall without imperfections).

Recessed box (type 503)

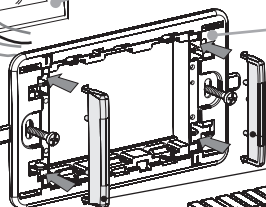


Sub-frame T1

**Important:** if necessary, prepare the sub-frame T1 and insert the side ledges (only if required) based on the plate used (see the previous paragraph on the front of the sheet).

Fasten the Sub-frame from the type 503 recess box

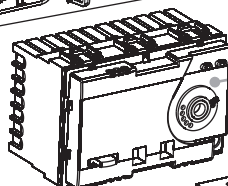
attention to the position of the insertion pins of the ledges note: reduced thickness extenders only for Bticino series Matix



Electronic device: thermostat or programmable thermostat or gas detector

Note: insert the batteries in the devices with 3V power supply

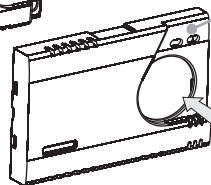
Complete the electrical connections as per image diagrams in the specific instructions and insert the device in the sub-frame until it locks



Front

Note: only for thermostats where foreseen, also insert the handle in the same direction as described in the specific instructions

Apply the chosen front (to the 4 lateral blocking teeth present on the device)



Frame

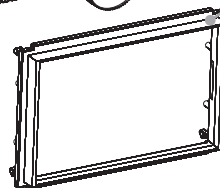
**Important!**  
**only for Bticino Axolute series**

## Note:

the images used for the electronic device and the front are only indicative, useful to show the correct installation sequence for the thermostat, or programmable thermostat, or gas detector.

**For other indications, consult the specific instructions for the device.**

Hook the 4 hooks of the frame to the T1 sub-frame (only for Bticino Axolute civil series)



Apply to the sub-frame the plate of the chosen series

